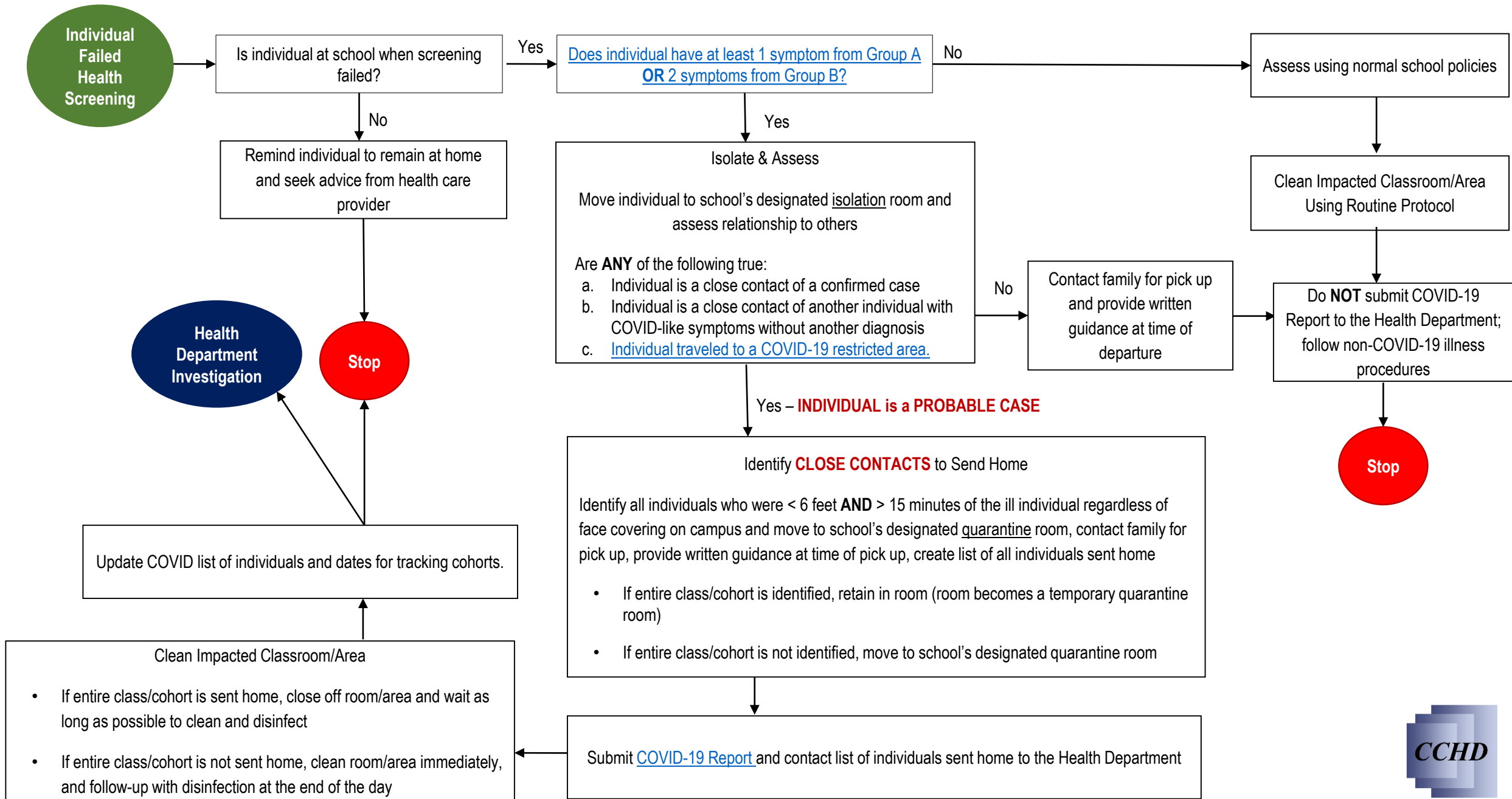


Responding to COVID-19 in schools is a partnership between schools and the Chester County Health Department. The purpose of this document is outline the steps necessary to respond to COVID-19 to include:

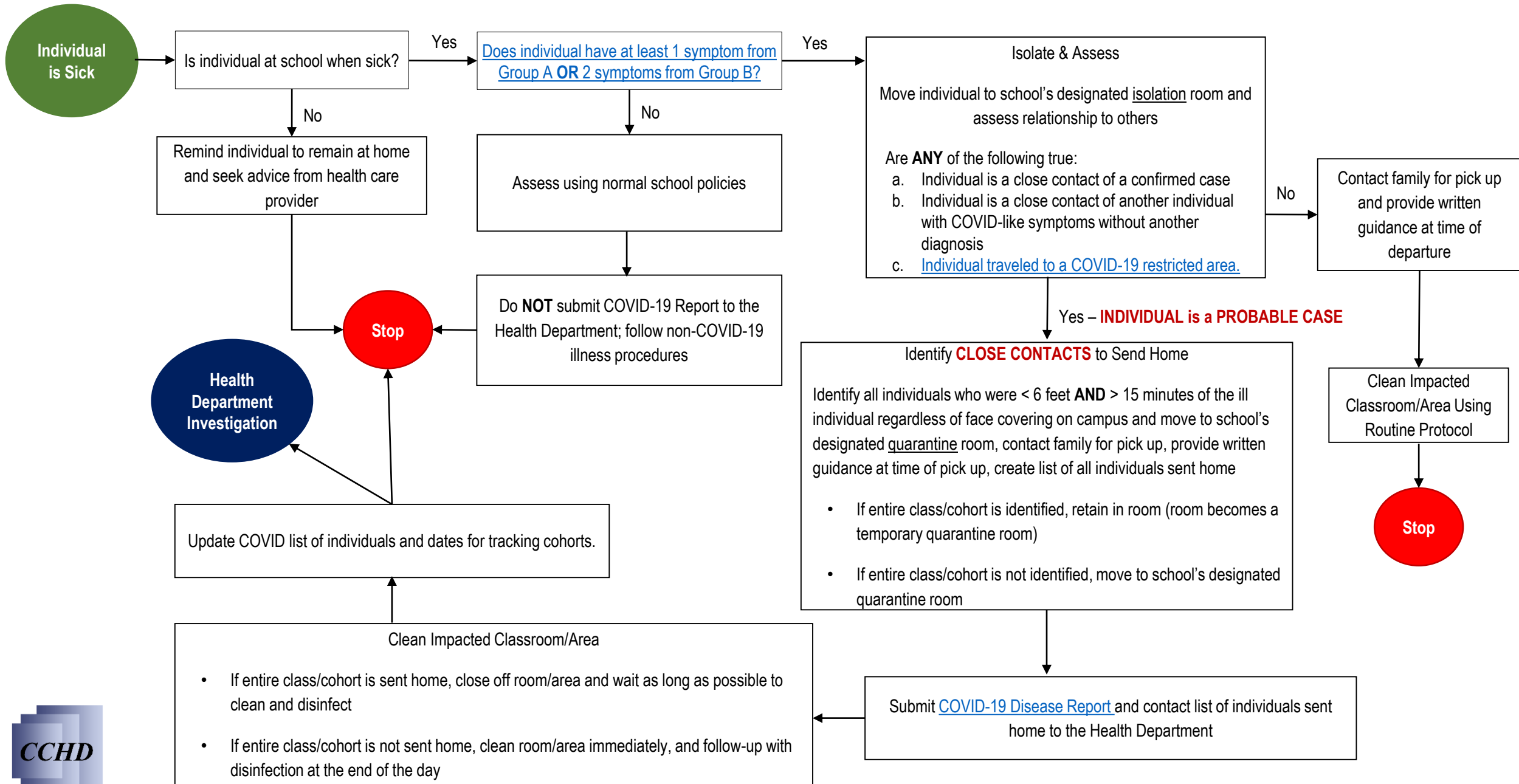
- ✓ Assessing if the individual is on campus, or not
- ✓ Assessing if symptoms exist
- ✓ Isolating individuals with symptoms and quarantining individuals exposed
- ✓ Sending individuals home based upon initial assessment of exposure
- ✓ When to submit the COVID-19 Disease Report
- ✓ Tracking of individuals impacted
- ✓ Cleaning affected areas



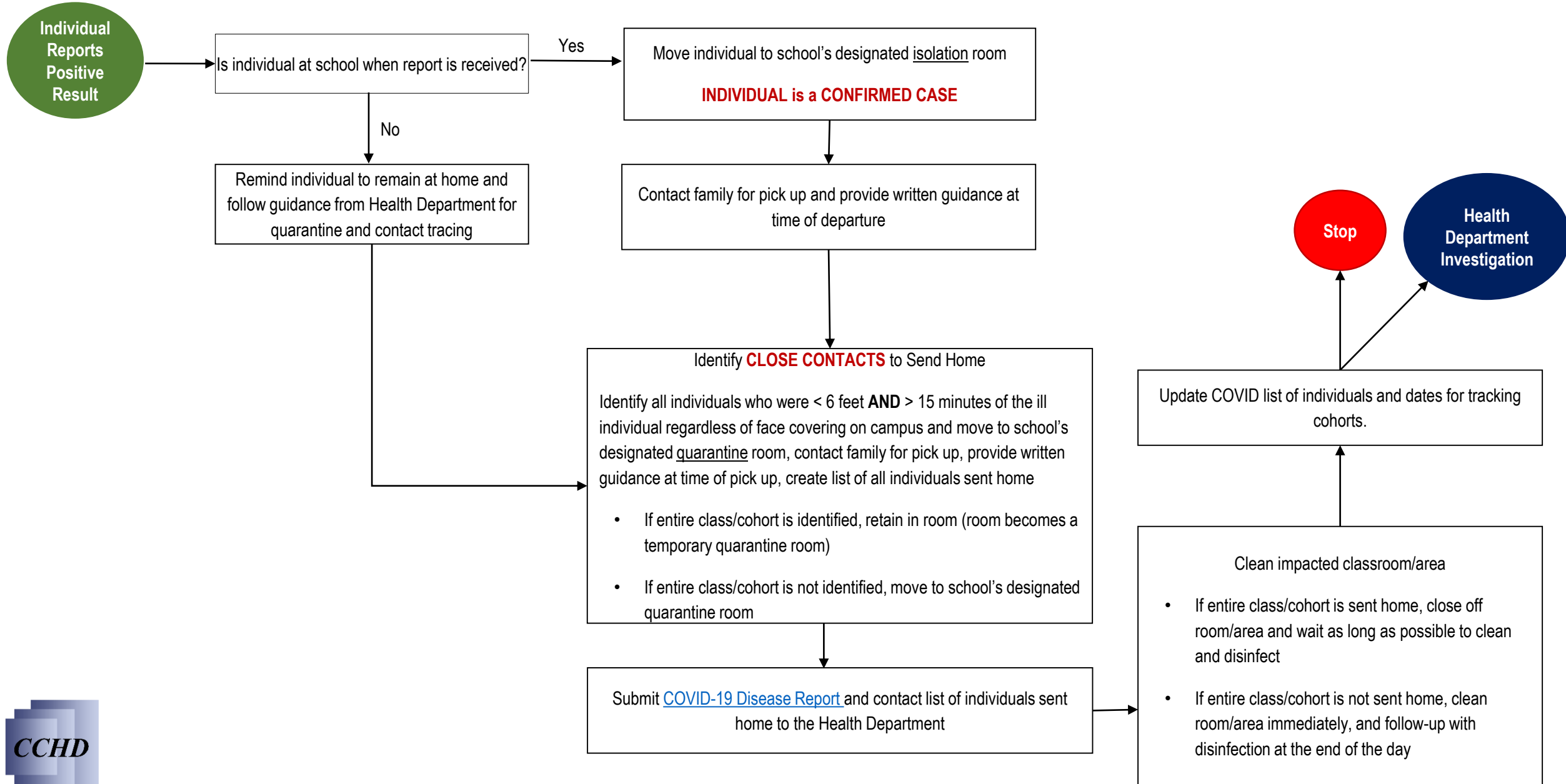
School Response to COVID-19 – FAILED HEALTH SCREENING



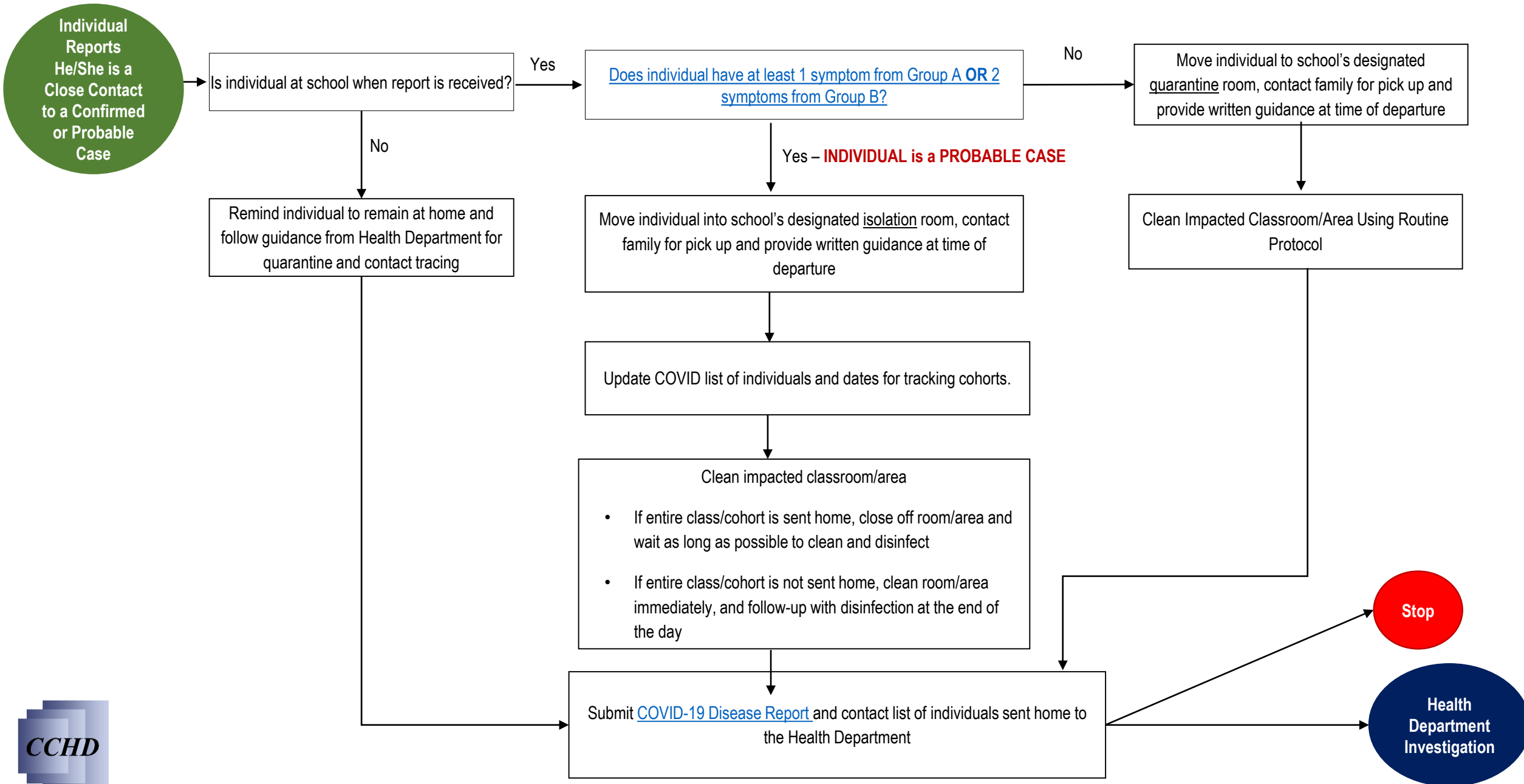
School Response to COVID-19 – SYMPTOMS PRESENTING



School Response to COVID-19 – POSITIVE TEST REPORTED



School Response to COVID-19 – CLOSE CONTACT REPORTED



Individuals are considered COVID-19 symptomatic if he/she has:

- At least one (1) symptom from Group A
- OR**
- Two (2) or more symptoms from Group B

Group A 1 or more symptoms	Group B 2 or more symptoms	
Lack of smell or taste (without congestion) Cough Shortness of breath Difficulty breathing	Fever (Oral>100, axillary/temporal>99.5) Sore throat Chills Muscle pain Fatigue	Headache Congestion or runny nose Nausea or vomiting Diarrhea

For a current list of symptoms see CDC’s website: <https://www.cdc.gov/coronavirus/2019-ncov/symptoms-testing/symptoms.html>.
 Individuals with a known chronic condition that presents symptoms like those in either Group A or B may be exempt for those symptoms with documentation from a physician.

